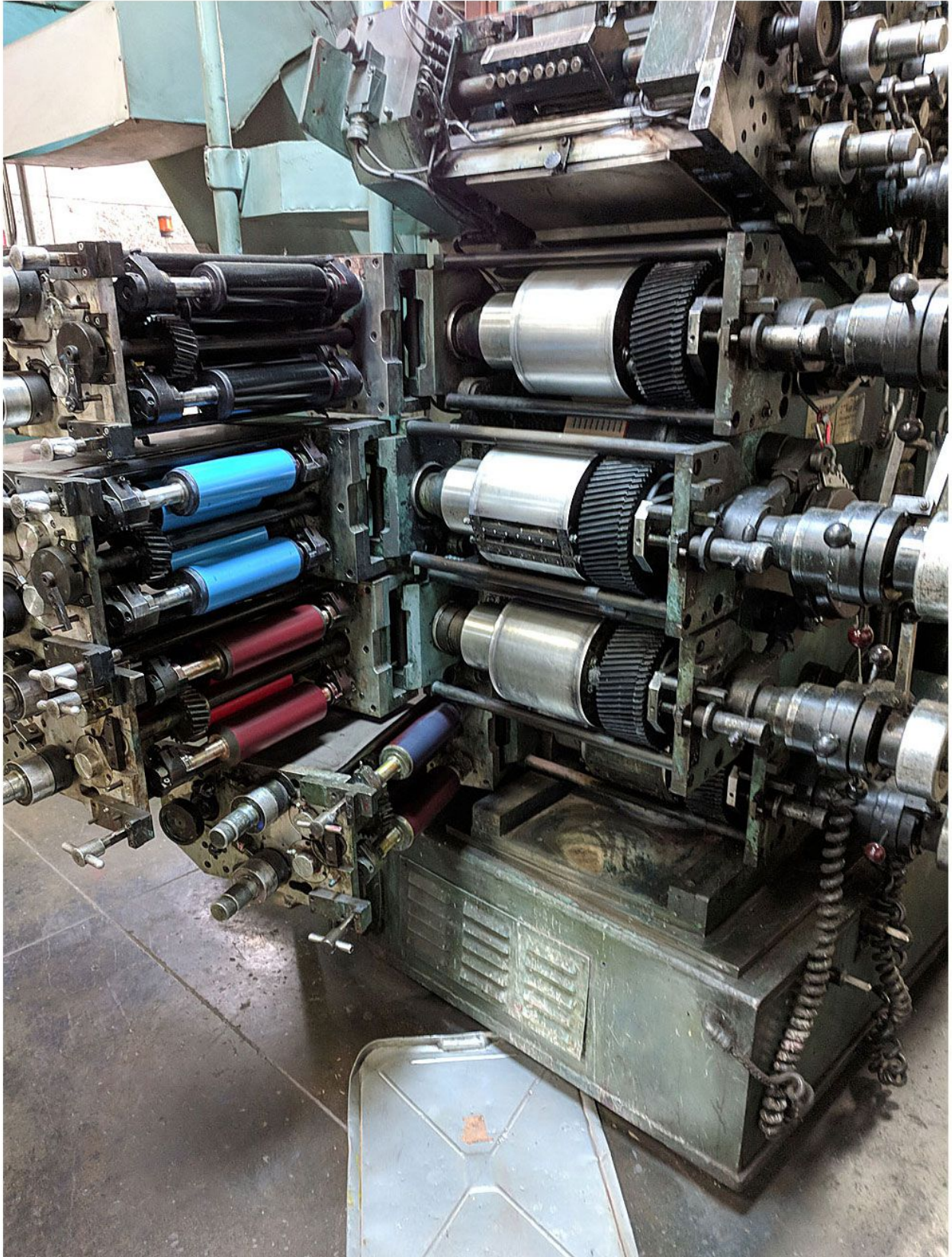
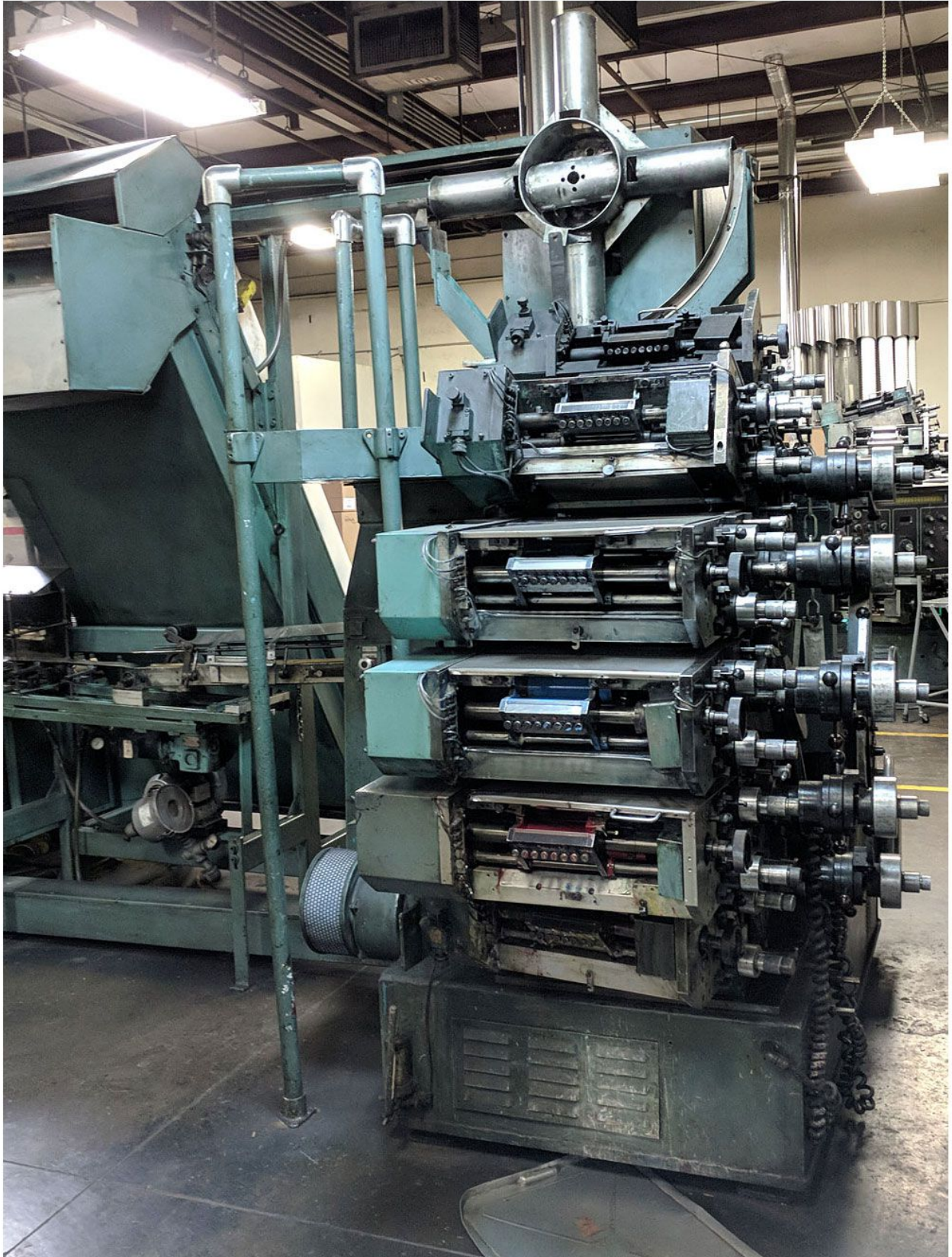


Van Dam M 560 COM II Cup Printing Machine



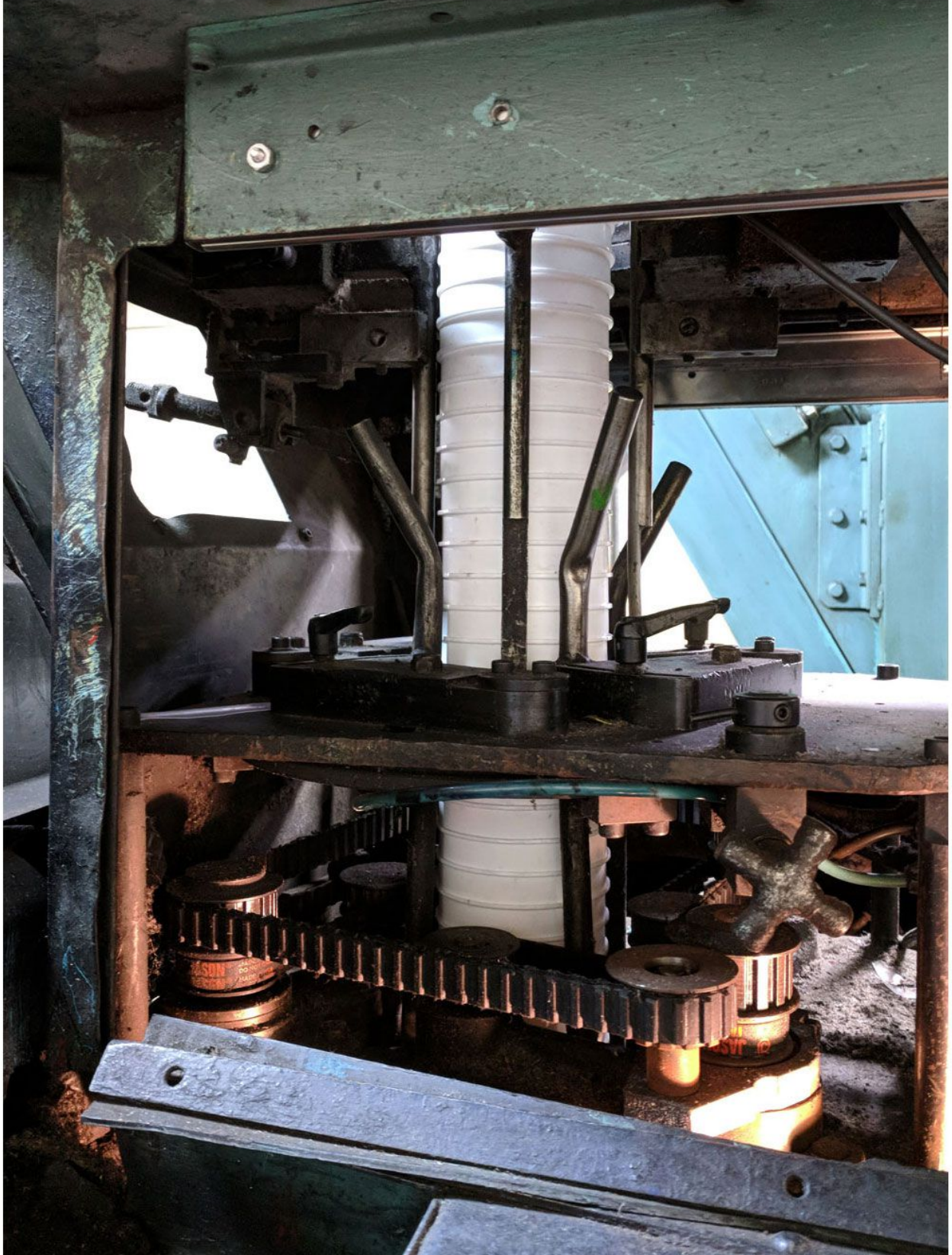




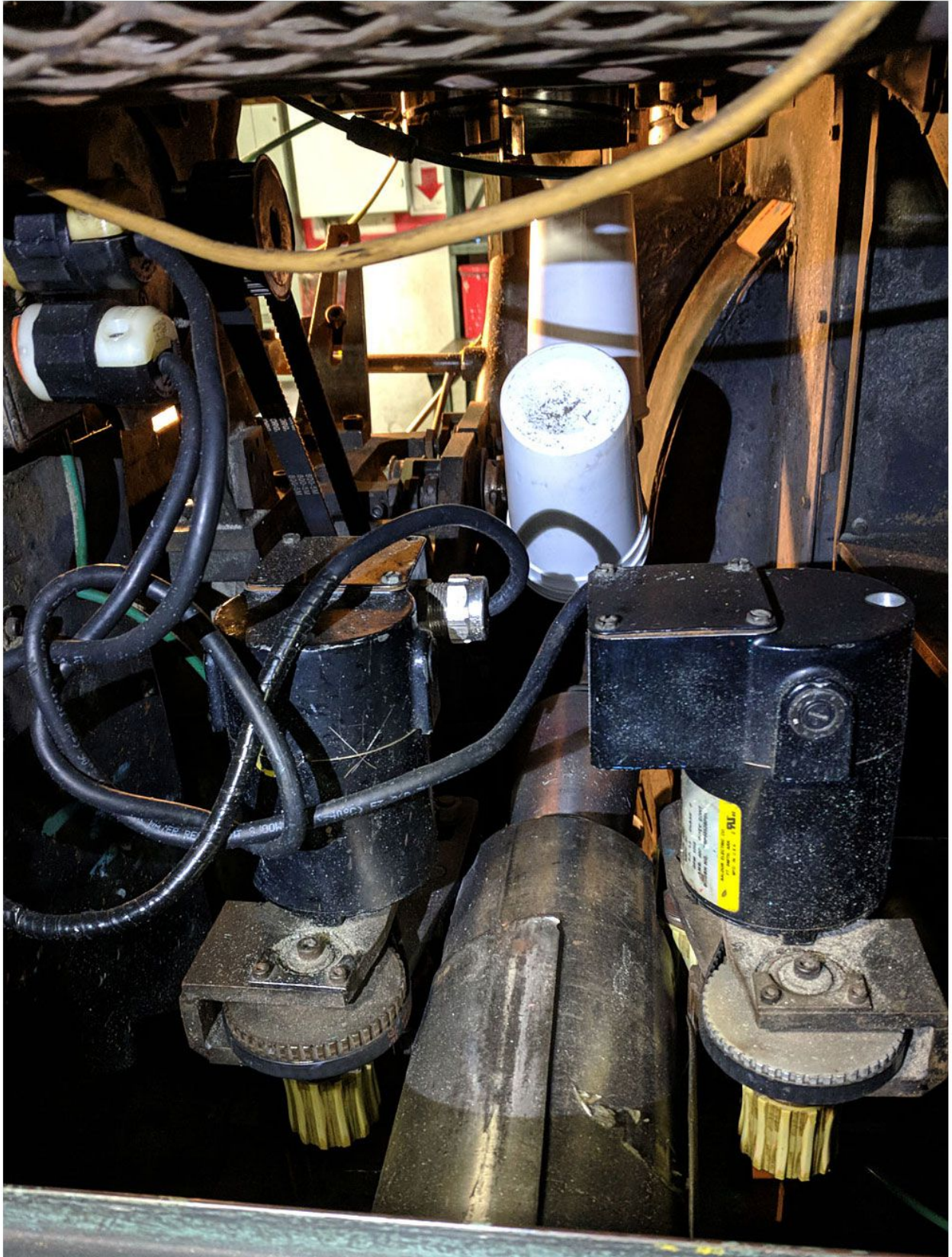


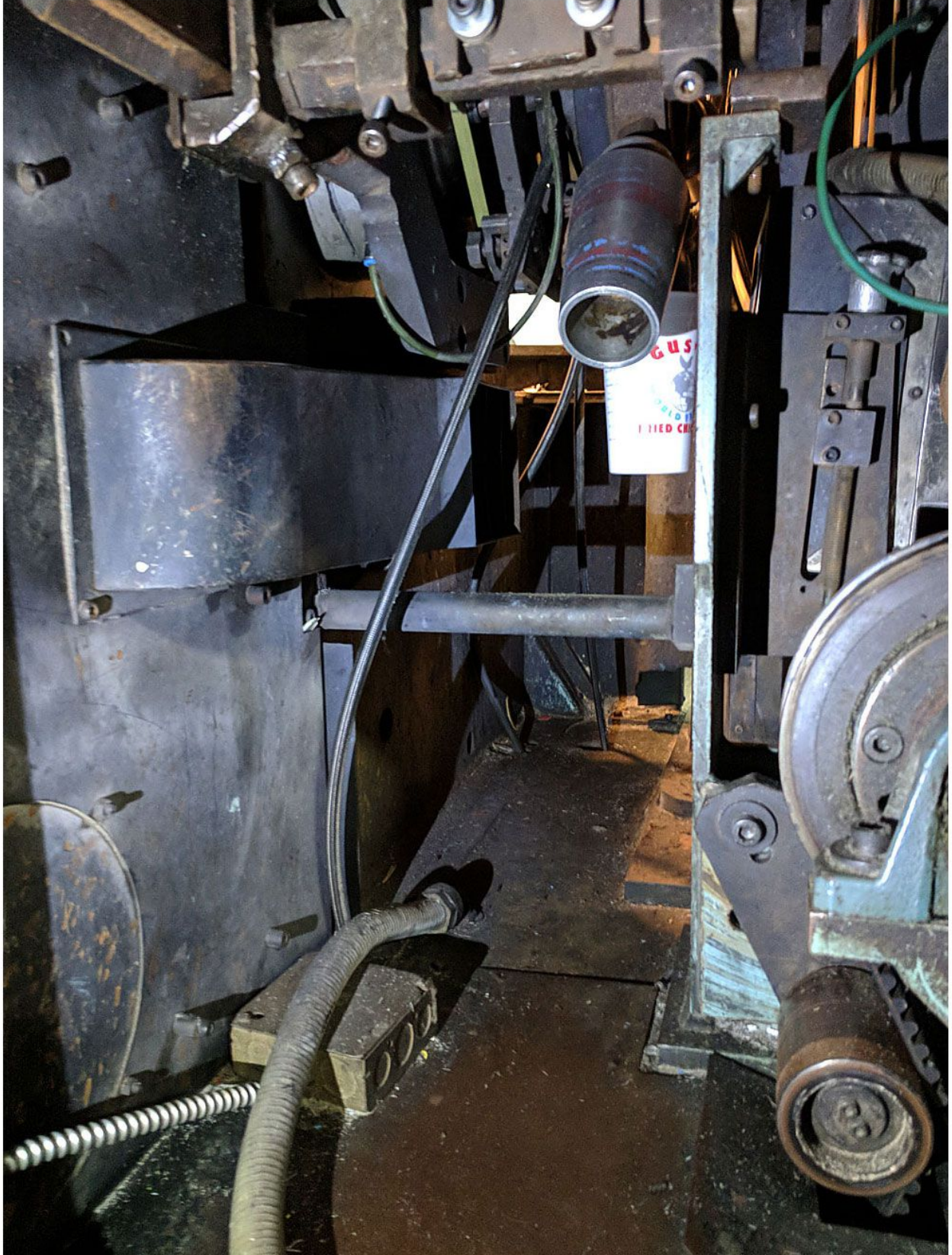




















3.000.A

M 560 COM II

TECHNICAL DATA

1. MANDREL_DISC
 - Number of mandrels : 8
 - Vacuum through mandrel
 - Eccentric mandrel bearing for adjusting mandrels.
 - Variable speed motor for rotating mandrels in front of UV curing and pre-treatment.

2. INDEX_MECHANISM
 - Cam and follower wheel operated.
 - Number of stops : 8
 - Index time : 150 degrees
 - Dwell time : 210 degrees
 - Acceleration pattern modified sine.
 - Angular index accuracy : 0 degree 00' 34"
 - Mechanism completely closed and running in oil.

3. OFFSET_CYLINDER
 - Pitch diameter : 807.52 mm.
 - Number of offset blankets : 4
 - Number of layers : 2
 - Thickness of blanket : 1.68 mm.
 - Double adhesive tape : .51 mm.
 - Width of cylinder : 200 mm.

4. PLATE_CYLINDER
 - Pitch diameter : 201.88 mm.
 - Width of cylinder : 210 mm.
 - Running register - sideways : 33 mm.
 - Running register - around : 9 mm.
 - Printing plate mounting with spring-loaded pin bars (registration).

5. INKER_SYSTEM
 - Form rollers (different diameter) : 2
 - Oscillating rollers : 2
 - Rubber idler roller : 1
 - Steel idler roller : 1
 - Ink fountain roller remote control.

6. UV CURING SYSTEM

Focal Length: 50mm from front of lamp unit
Number of Lamps: Two
Lamp Spectra: Mercury (hg) standard
Lamp Power: 500 Watts/Inch (120 Watts/cm)
Arc Length: 7"
Effective Cure Length: 6"
Cooling Air Flow: 120 cu.ft./mm. nominal per lamp
Lamp Life: 1,000 hours or 2,500 switched operations whichever is the sooner
Power Requirements: 8 Kva
Lamp Start/ Restrike: From cold - better than 30 secs.
45 secs. after switch off:
10 secs. (7" Arc)
3 mins. after switch off:
25 secs. (7" Arc)

7. ELECTRICAL

- Main Motor : 10 HP
- Dynamic braking
- Cooling-fan motor : 2 HP
- Vacuum pump motor : 1 1/2 HP
- Mandrel drive motor : 1/4 HP
- Crossed turret motor : 1/2 HP
- Tray Feeder motor : 1/2 HP
- Metal Box UV blower : 3/4 HP
- (6) Fountain Roller motors : 1/3 HP Optional
- (2) Belt take-off motors : 1/15 HP
- Restacker Flipper motor : 1/4 HP
- Orienting drive motor : 1/15 HP Optional

3.000.C

STANDARD PRODUCT SPECIFICATIONS FOR MODEL 560 COM II

- Container Diameter ----- 2 1/2" dia. to 6 7/16" dia.
- Container Height ----- Up to 8"
- Printing Length:
 - With Pin Bar Plate Cylinder:
 - with 2 Blanket Positions --Up to 21 3/8" Circumference
 - with 4 Blanket Positions --Up to 14 1/2" Circumference
 - Printing Height -----Up to 5 7/8"
 - Container Taper -----Up to 12 degrees (per side)
 - Wall thickness Variation --Less than .005" total

NOTE: Standard Product Specifications noted can be modified on special request.

STANDARD MACHINE SPECIFICATIONS MODEL 560 COM II

- Production speeds: operating in two blanket mode-up to 225 PPM*
operating in four blanket mode-up to 450 PPM*
- Floor area: approximately 10'2" x 13'4"
- Height: approximately 10'
- Electrics: 230/460V., 3 Phase, 60 Hz. (other on request)
- Main drive: 10 H.P., variable speed D.C.
- Air consumption: 40-45 cfm at 80 psi
- Air pressure: 80-120 psi
- Connected load: + approximate 20 kw (45 amps at 460 V or 90
amps at 230 V

Depending upon container size and lip configuration